



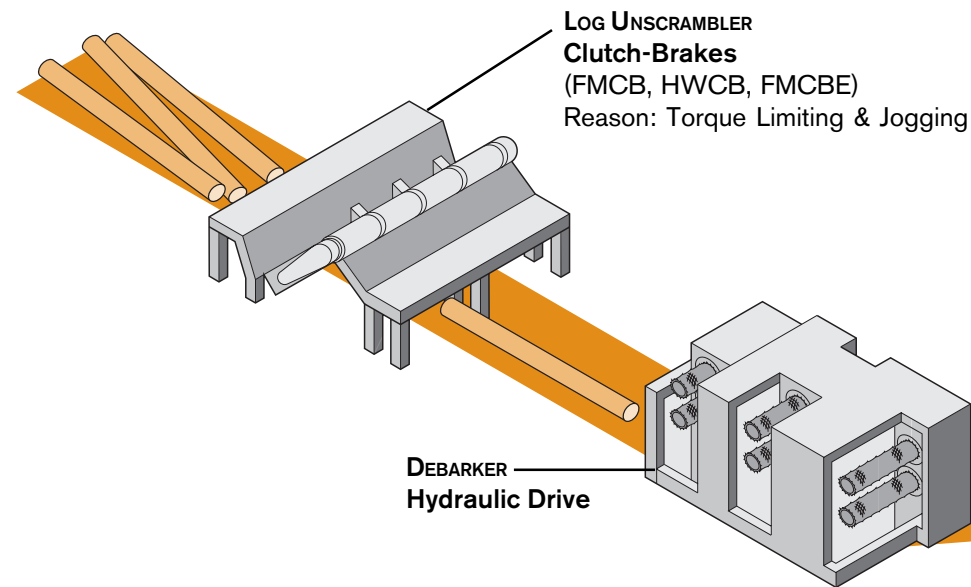
PRODUCTS
FOR THE

WOOD PROCESSING INDUSTRY

APPLICATION GUIDE

NEXEN SOLUTIONS FOR YOUR WOOD PROCESSING MOTION CONTROL CHALLENGES

Nexen has a wide range of products designed for use in all areas of the wood processing industry. Our extensive range of product sizes and torque availabilities guarantees that Nexen has a unit to fit your machine requirements. With safety concerns a top priority in all industries today, Nexen's products ensure dependable performance in stopping, cycling and holding situations where both the protection of the motor and the operator are a concern. Our air-engaged and spring-engaged products prolong the life of your drive units, thus minimizing maintenance time and costs. Nexen's history of success in industrial applications reinforces our pledge that air- and spring-engaged units run better and last longer than comparable electric units.



BANDSAW BD Caliper Brakes
Reason: Reduce Coast-Down Time

TRIMMER Clutch-Brakes
Reason: Product Positioning
Servo Motor Brakes
Reason: Safety Holding & Stopping

CHIPPER BD Caliper Brakes
Reason: Reduce Coast-Down Time

STACKER Clutch-Brakes
(FMCB, HWCB, FMCBE)
Reason: Overload Protection, Spring-Set Braking
A separate clutch and motor brake unit can also be used.

WRAPPER/STRAPPER Clutch-Brakes
(FMCB, HWCB, FMCBE)
Reason: Positioning

BOARD UNSCRAMBLER & SORTER Clutch-Brakes (on unscrambler)
(FMCB, HWCB, FMCBE)
Reason: Torque Limiting & Jogging
Clutches (on sorter)
(M-800 & H-1000)
Reason: Jogging, Cycling and Positioning

TRANSFER CONVEYORS

Nexen also has a wide range of rugged clutches and clutch-brake combinations ideal for use in conveying applications. The powered conveyors carrying material between stations benefit from clutches and clutch-brakes that regulate movement through the saw mill. (Please consult the Material Handling Application Guide, 21102, for more information on Nexen products in conveying applications.)



Servo Motor Brakes are perfect for multiple and trim saw operations requiring vertical and horizontal movement. Designed with safety in mind, this line has a spring-engaged brake to fit any servo motor.

- High torque— strong enough to stall a servo motor
- High overhung load capacity
- Quick, safe emergency stopping and holding

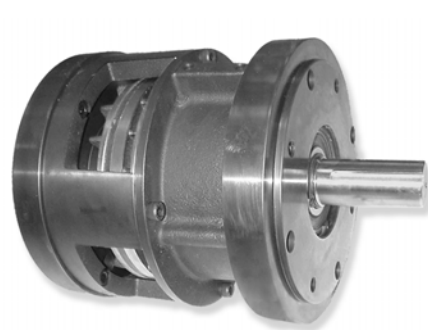
Motor Brakes offer emergency and dynamic stopping capabilities in holding applications. Easy installation and maintenance and low wear rate on the friction material make this a trouble-free solution to your cycling, stopping and holding application problems.

- Spring Set, Air Released
- High torque capacity
- Continuous thermal horsepower up to 0.22 kW [0.30 HP_T]



Friction Clutches are perfect for cycling applications as on trimming machines. A wide range of torque availability and multiple designs ensure a product to fit your machine.

- Low initial cost and inexpensive to operate, maintain and repair
- Pilot for pulley and sprocket mounting
- Self-adjusting for friction material wear
- Simple design— few moving parts

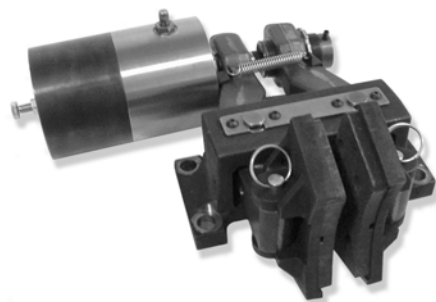


Clutch-Brakes provide consistent control and accurate positioning in high stress applications. Nexen offers both shaft- and flange-mounted units to fit any product specification.

- Wide range of torque availability
- Single-piston design eliminates clutch-brake overlap
- Accommodates 0.3–14 kW motors [1/2–20 HP]
- Standard NEMA frame sizes allow for easy installation

BD Caliper Brakes save valuable time on saw and chipper machines by quickly stopping blades and securing them during maintenance or machine checks. They also function as a holding brake on stackers and decanters.

- Air- and spring-engaged models with air or hydraulic release
- Wide range of torque availability
- Detent pins for quick facing removal
- Simple design— easy to maintain
- Dependable in e-stop situations





www.nexengroup.com

nexen®

Nexen Group, Inc.

Headquarters/North America

Nexen Group, Inc.
560 Oak Grove Parkway
Vadnais Heights, MN 55127-8509
Phone: 1-800-843-7445
or 651-484-5900
Fax: 651-286-1099

Mexico/Latin America

Frenar s.a. de c.v.
Ave. Sor Juana Inés,
De La Cruz # 14, D-105, 106
Tlalnepantla, Edo México
C.P. 54000. México
Phone: 52-55-65-45-06
Fax: 52-53-90-54-83

Europe

Nexen Europe Group
Koningin Astridlaan 59, B12
1780 Wemmel,
Brussels, Belgium
Phone: (32) 2 461-0260
Fax: (32) 2 461-0248

Japan

Nexen Japan Group
3-3-1-403, Midori-Cho
Fuchu-City, Tokyo 183 Japan
Phone: 81-423-36-3533
Fax: 81-423-36-6534

Australia

Norman G. Clark (A/Asia) PTY. LTD.
44 Kylta Road
West Hiedelberg, Victoria 3081 Australia
Phone: 61-3-9457-5833
Fax: 61-3-9457-5781